



Document Solutions

> PRINT > COPY > SCAN > FAX

**TASKalfa 3212i**

**TASKalfa 4012i**

MONOCHROME MULTIFUNCTION  
PRODUCT  
FOR A4/A3 FORMAT

BRING SEAMLESS  
EFFICIENCY



- Fast A4 copy/print speed up to 32/40 cpm.
- High image quality with 1,200 x 1,200 dpi print resolution.
- Superior scanning performance with dual scan speed up to 160/160 ipm A4 Mono/Color \*.
- Speedy first copy time in just 3.6 seconds\*\* and warm up time 18 seconds.
- 320GB\*\*\* hard disk capacity and 2GB RAM to meet heavy-duty tasks without an additional hard drive.
- Flexible with various paper handling systems and different capacity document processor combinations to meet different users' requirements.
- Convenient with inner Job Separator as standard.
- Environmentally friendly with low energy consumption due to intelligent device recovery system.

\* Optional DP-7110 required.  
\*\* TASKalfa 4012i only.  
\*\*\*Optional for TASKalfa 3212i.





# Born to be Extraordinary

## KYOCERA Document Solutions is Extraordinary for

- Broad Range of Multifunction Devices and Printers
- Optimized Total Cost of Ownership (TCO)
- Reliable with Long Life Drum and Parts
- New and Advanced Technology

KYOCERA Document Solutions strives to be a company that contributes to the society and demonstrates “Customer First” principle by providing customers with maximum value to increase their satisfaction. By adhering to the mission of producing document management devices that take balance between “Economy” and “Ecology”, KYOCERA Document Solutions succeeds to develop document management devices with advanced technologies which help customers to optimize office productivity and efficiency at a low total cost of ownership and, at the same time, improving environmental performance.

## Keep Productivity Flowing

This reliable multifunctional device eases workflow significantly with high flexibility and productivity. With a wide range of innovative solutions, it is perfectly suitable for demanding desktop users and small workgroups.

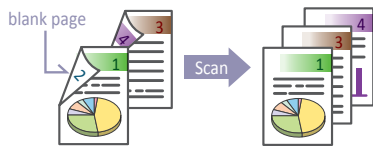




# Impressive COPY/PRINT/SCAN/FAX

## Copy

- **Skip Blank Page:** Copy/scan to save unnecessary cost by skipping blank pages.



- **Job Finish Notice:** Send email notification to the specific user when a Copy/Scan job is completed.



- **Prevent Bleed-thru:** Remove unwanted background when Copy/Scan a printed double-sized thin paper (e.g. newspaper, NCR paper, and magazine).



## Print

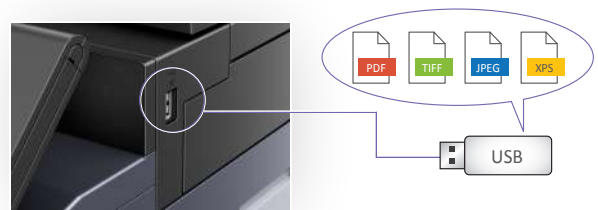
- **Job Skip:** Automatically prioritize the error print job to avoid the machine come to a halt in case of

1. Paper empty in specific tray
2. Mismatched paper size
3. Mismatched media type

Received Order Order of Received JOBs				JOB Execution Order Order of Printed JOBs			
Sequence	Job	Paper Size	Status	Sequence	Job	Paper Size	Status
1	0001	A3	NG	1	0002	A4	OK
2	0002	A4	OK	2	0004	A4	OK
3	0003	A5	NG	3	0001	A3	NG
4	0004	A4	OK	4	0003	A5	NG

## Scan

- **USB Scan to/Direct Print:** Scan to/print directly from USB Memory in PDF/Compression PDF/TIFF/JPEG/XPS format.

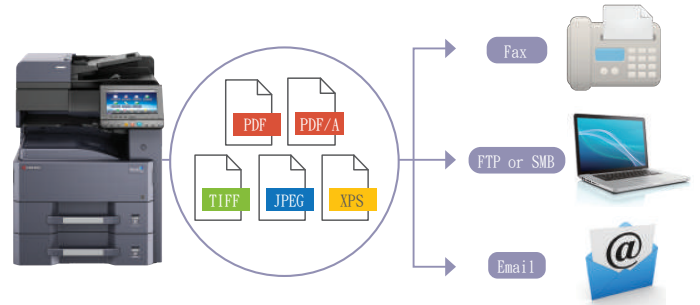


- **Scan to Searchable PDF function (Optional):** Easily search the text inside PDF files after scanning the hardcopy document and convert text via OCR function. **EASY**

- **High Compressed PDF Size:** Adopt new image analysis technology to achieve smaller file size.

- **Scanned Image File Size Check:** Check the size of the scanned document does not exceed limit before sending e-mail.

- **FTP/SMB/Email/Fax Multi-Sending:** Send document to different destinations (email addresses, folders, etc.) in a single scan operation.



## Fax

- **Simple Fax Forwarding:** Forward incoming fax to other destinations by Email, SMB or FTP (Optional).



- **i-FAX Sending (Optional):** Send and receive i-FAX without the mail service by installing Direct SMTP function. **INSTALL**



## User-Friendly

- **Excellent Clarity 9-inch Color Touch Panel:**

- With swivel type operability similar to smartphone and tablet.
- Tiltable from 15° to 90°.



- **Easy-to-Use Keypad:**

Type in with easy with on-screen virtual numeric keypad (hardware keypad is optional).



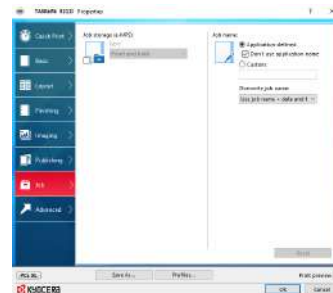
- **Convenient Home Screen:**

- All commonly used functions and applications are found.
- Customize easily to meet different needs of users/group users.



- **Intuitive Printer Driver's Quick Print Tab:**

Create and save frequently used custom profiles as graphic icons to allow programming of complex jobs in one click.



- **Easy-to-Reach Custom Box:**

Provide long-term job storage at a device, allowing users to securely print and store jobs on the device and output them when required.



- **Low Power Consumption Mode:**

- Adopt spot conduction for intelligent recovery system by activating only the areas of the device required for the operation.



- Choose recovery priority mode/power priority mode based on different needs.

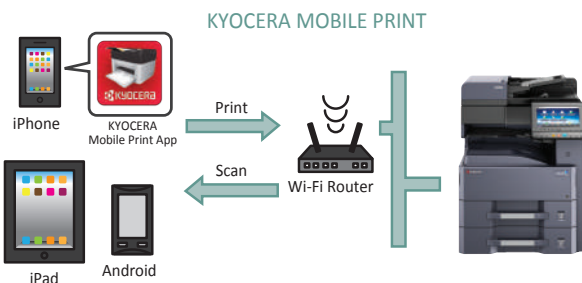


# Access Securely and Quickly with Mobile & Cloud Solutions



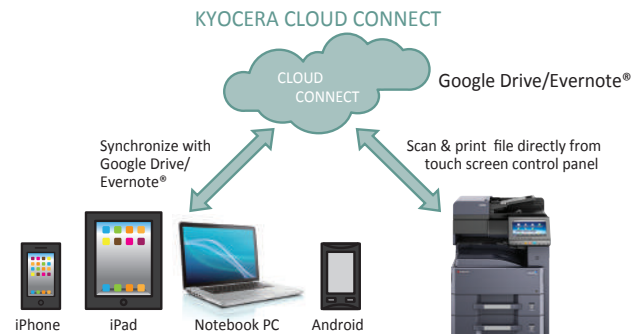
## • Simplify Document Workflow KYOCERA Mobile Print:

- Print documents/webpages/image from virtually anywhere, on Apple/Android smartphone/tablet to designated KYOCERA MFPs and printers.
- Scan files and images from same MFPs to mobile devices.
- Support AirPrint for iPhone and iPad.



## • Print Anywhere KYOCERA Cloud Connect (Optional):

- Retrieve and print files in Google Drive/Evernote®, directly from any KYOCERA HyPAS-enabled MFPs.
- Upload scanned files to Google Drive/Evernote®, directly from the MFP (without using a computer).

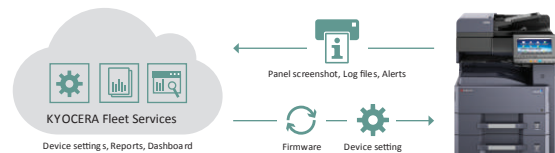


## • Intuitive KYOCERA MyPanel:

- Use smartphone/tablet to connect a compatible networked KYOCERA printing device on local Wi-Fi network wirelessly.
- Perform COPY/PRINT/SCAN from Custom Box/ Cloud# by mobile devices with personalizing settings.

## • Powerful KYOCERA Fleet Services (Optional):

- Overview of all the devices status and receive notifications via the cloud.
- Preempt and plan for maintenance needs.



## • Support Gmail and Hotmail Public Mail Services:

- Scan documents to email accounts from the device and automatically print documents directly from accounts.

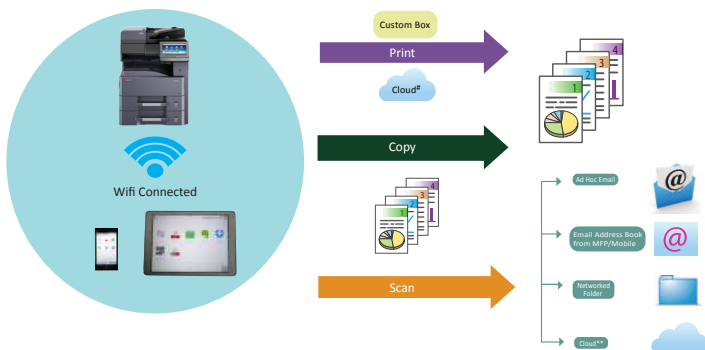


## • Support WiFi Direct:

- Require IB-36 Wireless LAN (Optional)



- Makes print/scan via AirPrint/Google Cloud Print/Mopria/KYOCERA Mobile Print/KYOCERA MyPanel much easier.



#Cloud Application Supported: Dropbox, Evernote, OneDrive



## Data and Document Security

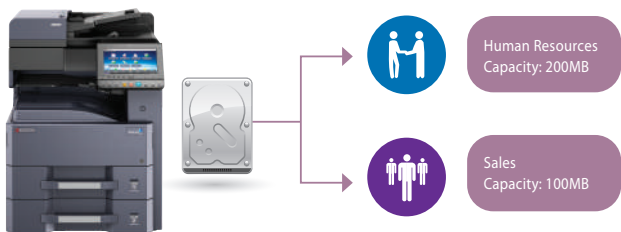
- **Confidential Printing with Private Print:** Release print job at the device by entering a preset four-digit access code when making a print at KYOCERA KX Driver.



- **Secure with Password Protection Setting:** Allow administrator to set Password Policy to limit user access to designated capacity.



- **Strong Network Authentication:** Access and manage information through network authentication for Windows Server using Kerberos or NTLM.



- **Safe FAX Memory Overwrite (Optional):** Erase FAX memory after sending or receiving for confidentiality.



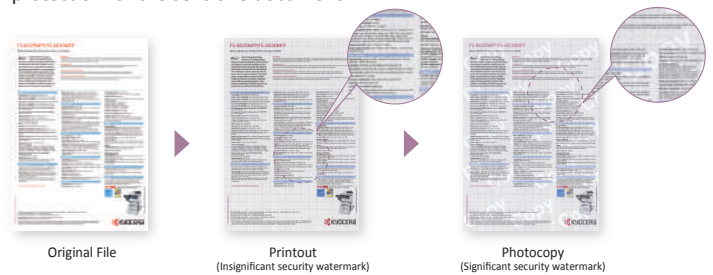
- **IPv6 Ready:** Compatible with future network infrastructures as supporting IPv6.



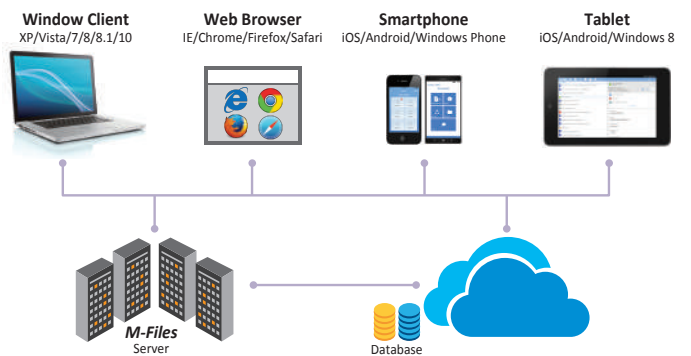
- **Effective Card Authentication (Optional IC Card Reader):** Control access and manage with predefined user restrictions such as maximum amount of output restrictions.



- **Security Watermark:** Distinguish originals from photocopies and provide protection for the sensitive document.



- **Intuitive M-Files (Optional):** Easily find and manage all information e.g. documents, projects and business processes etc, as well as add intelligence by combining it with information from other systems (like SharePoint, Salesforces and SAP).



- **Highly Reliable KYOCERA Data Security Kit (Optional):** Encrypt data before storing in the hard disk and automatically overwrite all unnecessary data stored on the hard drive.



- **Secure Socket Layer (SSL) Data Security Protocol:** Prevent eavesdropping and tampering by enhancing secure communication for remote configuration and data retrieval.





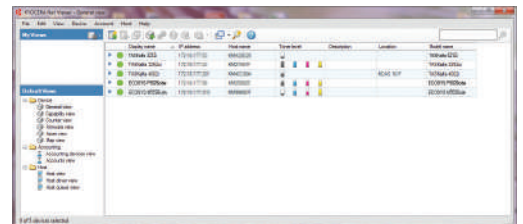
## Simplify Administration Process

Provide real ease-of-use to all users and administrators.

- **Web-Based KYOCERA Command Center RX:** Check the operation status of the device, toner level, paper availability, as well as change settings related to security, network printing and advanced network setting etc.



- **Comprehensive KYOCERA Net Viewer (Device Management & Reporting):**
  - Monitor, maintain, and update up to 100 network printing devices locally and remotely.
  - Simply install and update the firmware on all KYOCERA network connected devices while easily monitoring printed pages, device configuration, accounting, toner usage, and alerts.
  - Greatly reduce the manpower required to monitor connected devices.



- **Well-Structured KYOCERA Net Manager (Optional):**

- Protect confidential data, manage & control the overall output (copy/print/scan) and get detailed reports
- Users: Simplify the process by overviewing personal printing jobs with personalized settings web browser.
- Card Authentication Kit (Optional): Get print document directly and allow quick and secure access settings with pre-defined user restrictions such as output quota.



## Go for the Green Future

### Green Design

- **Weekly Timer:** Preset the machine on and off time to maximize power savings.
- **EcoPrint:** Consume less energy and toner.
- **Energy Saver:** 1.0W or less power consumption at Priority Energy Saver Mode.
- Long Life Mega Surface Amorphous Silicon (a-Si) Drum, Developer and Replacement parts.
- Large capacity toner for maximum uptime and less wastage.
- Parts for Recycling.
- Non-toxic Materials.
- Quiet operation design for a comfortable working environment.



Eco Mark (Japan)



EcoLeaf Environmental Label (Japan)



Law on Promoting Green Purchasing (Japan)

KYOCERA aims at providing safe and comfortable products which have minimum environmental impact by acquiring various environmental labels.

			Main Specifications	
Model			TASKalfa 3212i	TASKalfa 4012i
Main Function			Copy, Print, Scan, Fax (Optional)	
Writing Method			Semiconductor Laser	
CPU			T1024 (Dual Core) 1.0 GHz	
Print Speed (A4)	Simplex (Mono)		32 ppm	40 ppm
Scanning Speed (A4) 300dpi	DP-7100 (Mono/Color)	Simplex	80/80 ipm	
		Duplex	48/48 ipm	
Scanning Speed (A4) 300dpi Dual Scan	DP-7110 (Mono/Color)	Simplex	80/80 ipm	
		Duplex	160/160 ipm	
Scanning Speed (A4) 300dpi	DP-7120 (Mono/Color)	Simplex	48/48 ipm	
		Duplex	15/15 ipm	
Memory			Standard 2GB (Max. 2GB)	
SSD/HDD Capacity			32GB (Standard)/ 320GB (Optional)	8GB / 320GB (Standard)
Warm Up Time			18 seconds	
Paper Capacity	Standard Maximum		2 x 500 sheets (Cassette) + 100 sheets (MPT)	
	Cassette		4,100 sheets (Main Unit + PF-810 + MPT)	
Paper Size	MPT		Min. A5R - Max. A3 (Ledger)	
	Cassette		Min. A6R - Max. A3 (Ledger)	
Paper Weight	Cassette		60 - 163 g/m <sup>2</sup>	
	MPT		45 - 256 g/m <sup>2</sup>	
Duplex Printing			Paper size: A5R - A3 / Ledger; Paper weight: 60 - 163 g/m <sup>2</sup>	
Output Capacity			250 sheets + 50 sheets (with Inner Job Separator) face-down	
Control Panel			9 inch Color Touch LCD Panel	
Dimension (W x D x H) (Main Unit)			594mm x 696mm x 683mm	
Weight (Main Unit)			Approx. 59 kg	
Power Consumption (Standard configuration)	Copy/Print Mode		510W or less	600W or less
	Stand-by Mode		100W or less	
	Energy Saver		1.0W or less	
Noise (ISO7779/ISO9296)	Copy/Print Mode		66.0dB(A)	67.0dB(A)
	Stand-by Mode		43dB(A)	
Safety Standard : GS/TUV/CE			This unit is manufactured according to ISO 9001 quality standard and ISO 14001 environmental standard. RoHs compatibility	
Copy Size / Resolution / Multiple Copy			Max. A3 (Ledger) - Min. A6R / 600 x 600 dpi / 1-999	
First Copy Time			4.3 seconds	3.6 seconds
Zoom Ratio	Manual		25% - 400% (1% Step)	
	Pre-defined		5R5E	
Print Functions (Standard)				
Resolution			9,600 Equivalent x 600 dpi; 1,200 x 1,200 dpi	
PDL			PRESCRIBE, PCL6 (PCL-5e, PCL-XL), KPDL3 (PostScript 3 compatible), XPS, OpenXPS, PDF Direct Print, PPML	
First Print Out Time			4.9 seconds	4.2 seconds
Supported Protocol			NetBEUI, FTP, Port 9100, LPR, IPP, IPP over SSL, WSD Print	
Operating System Supported			Windows Server 2008, Windows Server 2008 R2, Windows Server 2012, Windows Vista, Windows 7, Windows 8, Windows 10; Apple Macintosh OS 10.5 or later; Linux	
Interface			USB2.0 High Speed x1; 1000BASE-T/100BASE-TX/10BASE-T; USB Host interface (USB Host) x4; NFC TAG x1	
USB Memory Printing			Standard	
USB Memory Printing Format			TIFF, JPEG, PDF, XPS	
Mobile Printing			AirPrint, Mopria, KYOCERA Mobile Print	
Scan Functions (Standard)				
Color Selection			Auto Color (Color/Gray); Auto Color (Color/B&W); Full Color; Grayscale; Black & White	
Resolution			600dpi, 400dpi, 300dpi, 200dpi, 200x100dpi, 200x400dpi	
File Format			TIFF, JPEG, XPS, OpenXPS, PDF (MMR/JPG/High-compression PDF), PDF/A, Searchable PDF (Optional)	
Image Type Mode			Text, Photo, Text + Photo	
Transmission Type			Scan to SMB; Scan to E-mail; Scan to FTP or FTP over SSL; Scan to USB; TWAIN Scan; WSD Scan	
Address Storage			2,000 addresses (Common address list), 500 groups (Group address list)	
Fax Functions (Optional)				
Original Size			Max. A3 (Ledger) - Min. A5 (Statement)	
Coding Method / Transmission Speed			MMR, MR, MH, JBIG / 333.6kbps	
Memory / G3 FAX / Network FAX / Dual FAX			170MB / Yes / Yes (Fax System 12 x 2 units required)	
Fax Features			Opt. Internet-fax, network faxing, rotate transmission, rotate reception, duplex fax reception, memory reception, FAX BOX, remote diagnostic, dual fax with second fax system	
Consumables & Options				
Toner Kit			TK-7120: 20,000 pages with 6% A4 coverage	TK-7220: 35,000 pages with 6% A4 coverage
Maintenance Kit			MK-7129: 600,000 pages	
Platen Cover			Platen Cover Type E	
Document Processor			DP-7100: 140 sheets RADF Type; DP-7110: 270 sheets One-path duplex scan Type; DP-7120: 50 sheets RADF Type	
Paper Feeder			PF-791: 500 sheets x2 (A4/Letter); PF-810: 1,500 sheets x2 (A4/Letter)	
Finisher			AK-740: Paper Exit Path for Finisher; DF-7120: 1,000 sheets Finisher; DF-791: 3,000 sheets Finisher; PH-7C: Punch Unit; MT-730(B): 7 bins Mailbox Sorter; SH12: Staple for DF-791; SH-10: Staple for DF-7120	
Fax System			Fax System 12	
Internet FAX			Internet FAX Kit(A)	
Data Security			Data Security Kit(E)	
Card Authentication			Card Authentication Kit(B)	
Gigabit Ethernet Board			IB-50	
Wireless LAN Interface			IB-35 (802.11 b/g/n/Wireless LAN/WiFi Direct)	
Embedded OCR			Scan Extension Kit(A)	
Storage Device			HD-12: HDD 320GB (TASKalfa 3212i only)	
Numeric Key Pad			NK-7100(B)	



Document Solutions

### KYOCERA Document Solutions Asia Limited

13/F, Mita Centre, 552-566 Castle Peak Road, Tsuen Wan, N.T., Hong Kong  
Tel : +852-2496-5678 Fax: +852-2610-2063  
www.kyoceradocumentsolutions.asia

\*KYOCERA Document Solutions does not warrant that any specifications mentioned will be error-free. Specifications are subject to change without notice. Information is correct at time of going to press. All other brand and product names may be registered trademarks or trademarks of their respective holders and are hereby acknowledged.

@All rights reserved. Brochure/KDAS/201810/TOMCAT3



KYOCERA Business Partner